

Please Note: I apologize for the quality of these photos. They were discarded and abused by the elements for half a century.

Malone Flood Waters of 1948

In the last two weeks of March 1948, more than 15 inches of rain was recorded in local rain gauges at Malone. Five large ponds north of town were swelled to maximum capacity. The first three days of April produced four additional inches. On the second day the ponds begin to spill over. The northern most Wachomick Pond started a chain reaction by flowing into and overflowing the Sandy Pond. Following were the Wells Pond, Florida Pond, Boggy Pond and continuing through Malone south to Baxter Bay. The flowing waters created a 40 foot canal through Malone. When Baxter Bay filled to a maximum capacity the waters settled in Malone. Heavy equipment was brought in by the core of engineers to exit the water.



The home in this photo was replaced with the Malone I.G.A. Super Market. The view is looking across State Road 71 from the current Malone Post Office parking lot.



Highway 71 Curve North of Malone



House from Highway 71





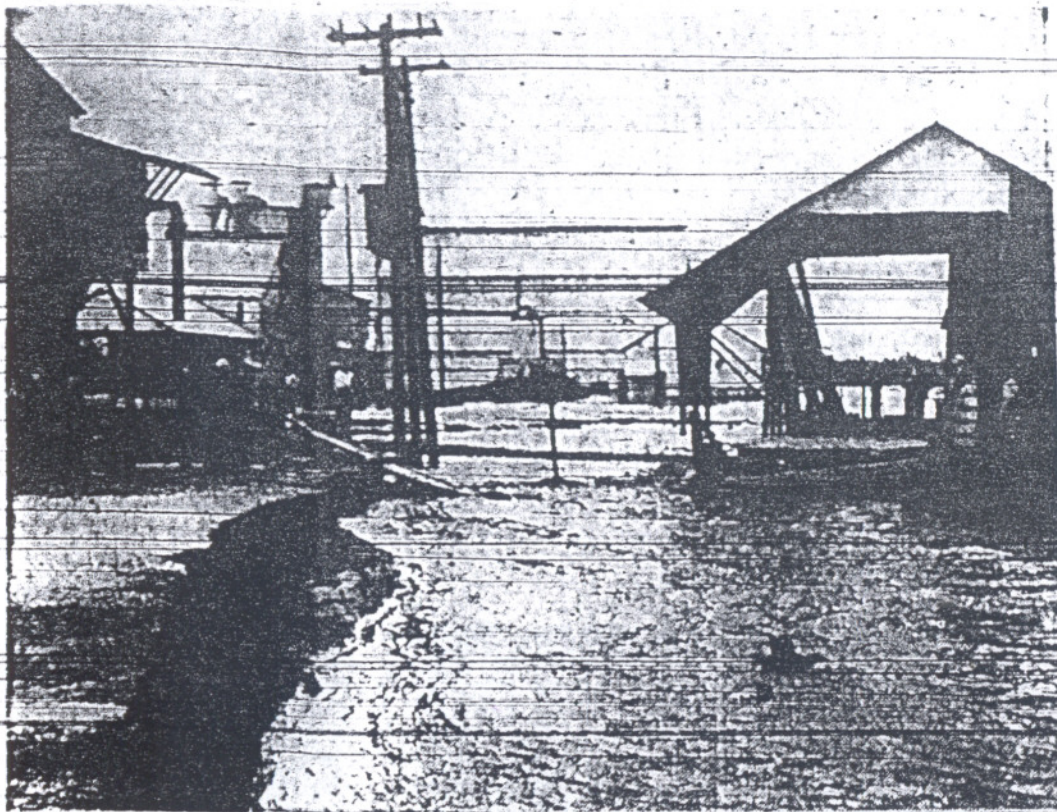
Ditty's Cleaners & Home One Block from Hwy 71& 2



Bert McDaniel's Car & Leroy Herring Pulling



Exiting Water from Malone



FLOODS HIT MALONE—Here is a view of the Malone Peanut Company's big mill at Malone, Fla., after waters from swollen ponds and streams to the north poured through the plant's grounds. The water cut a 40-foot ditch right alongside the office building, sweeping away tons of dirt, severely damaging a large quantity of stored peanuts, and causing a large warehouse to sag some eight or ten inches into the soft earth. Officials estimated the damage at more than \$25,000. (Eagle Staff Photo).

4 Dale Countians Injured In Crash

One Man May Die At Hospital Here

Four Dale County men were injured, one critically, in the head-on collision of two automobiles on U. S. Highway 231 about three miles south of Ozark late last night.

Seriously hurt was Howard Baker, 34, of Ozark, driver of one of the cars. Baker suffered severe head injuries.

The other injured men were listed by investigating highway patrol

Floods Retain Grip On Wiregrass Area

By VICTOR SMITH

Flood-and-storm-battered sections of Southeast Alabama, Northwest Florida and Southwest Georgia struggled in the grip of inundating waters for the fifth straight day today, as belated reports told of mounting damages in numerous areas. Train and bus transportation from Dothan to many points remained at a standstill late yesterday, while

Geneva Man Charged With Manslaughter

many communities in Northwest Florida and Georgia are still completely isolated by impassable bridges, flooded and damaged highways and washed-away railroad roadbeds.

Federal Judge To Settle Soft

Russian Guards Quit Post After U.S. Power Play

Armed Men Leave As Protest Lodged On Building Occupation

BERLIN, Sunday (AP) — Eight armed Russian guards early today quit the Soviet military railroad headquarters in the American sector of Berlin which has been surrounded by American military police.

The Russians left after Britain and the United States had presented a stiffened front to Soviet pressure and the United States had sent a note asking the Soviets to take "immediate steps" to remove the guards.

American military police said early today, however, they believed other Russians still were in the building.

The American military police yesterday blocked about 40 Russians from entering the offices where the Soviet zone rail network is directed.

Then they set up a road control point where Soviet officers motor from their homes in Potsdam to their offices in down-town Berlin and for four hours subjected Russian traffic to inspection.

The British, through deputy military governor, Maj. Gen. Nevil C. D. Brownjohn, bluntly declared "we will show the Russians that we are not going to be bullied."

Court Action After Truman For Move By

By MAX HALL and NORMAN W. WASHINGTON (AP)—A federal judge ordered John L. Lewis to end the coal strike.

Judge Matthew F. McGuire signed a temporary order at 7:30 p.m. at the request of the government.

Earlier in the day President Truman ordered Attorney General Tom Clark to seek the national emergency provision of the Taft-Hartley Act.

The President acted after disclosing that a fact-finding board had blamed Lewis for the coal stoppage which shut down soft coal mine railroad service and hampered steel making operations.

Judge McGuire's order expires April 13. On April 12 he will hold a hearing on the Justice Department's request for a preliminary injunction.

The judge directed his order at both the United Mine Workers which Lewis heads and the soft coal operators whose mines have been shut down for three weeks in a pension fund dispute.

The judge ordered: 1. The union not to continue the strike, or even to permit or encourage the strike. (The judge used the word "strike" even though this morning Lewis had told his members that the walkout is not a strike and he did not cause it.)

2. The union to "forthwith instruct" all members "immediately

Ship For

ROME—A ship running they were de

Angry C
nist Mayor
sel and dema
sticks and bi

Truman S